

Flute

Set 2 - Etude 1

Moderato

Musical score for Set 2 - Etude 1, Flute part. The score is in 2/4 time and B-flat major. It consists of five staves of music. The first staff starts at measure 1 with a forte (*f*) dynamic. The second staff starts at measure 6 with a piano (*p*) dynamic and includes a boxed section labeled 'A' at measure 8. The third staff starts at measure 11. The fourth staff starts at measure 16 and includes a boxed section labeled 'B' at measure 16. The fifth staff starts at measure 21 and ends with a fermata. The score includes various musical notations such as slurs, ties, and dynamic markings.

Moderato (In 2)

Set 2 - Etude 2 (Revised May 2023)

Musical score for Set 2 - Etude 2 (Revised May 2023), Flute part. The score is in 6/8 time and B-flat major. It consists of five staves of music. The first staff starts at measure 25 with a mezzo-forte (*mf*) dynamic. The second staff starts at measure 30 and includes a boxed section labeled 'A' at measure 32. The third staff starts at measure 35 and includes a 'cresc.' marking at measure 37. The fourth staff starts at measure 40 and includes a boxed section labeled 'B' at measure 40. The fifth staff starts at measure 45 and ends with a fermata. The score includes various musical notations such as slurs, ties, and dynamic markings.

Oboe

Set 2 - Etude 1

Moderato

Musical score for Oboe, Set 2 - Etude 1, measures 1-24. The score is in 2/4 time and B-flat major. It begins with a dynamic marking of *f* (forte) at measure 1. The piece features a melodic line with eighth and sixteenth notes, including slurs and ties. A first ending bracket labeled 'A' spans measures 6-10, and a second ending bracket labeled 'B' spans measures 16-20. The piece concludes with a dynamic marking of *p* (piano) at measure 24.

Moderato (In 2) **Set 2 - Etude 2 (Revised May 2023)**

Musical score for Oboe, Set 2 - Etude 2 (Revised May 2023), measures 25-49. The score is in 6/8 time and B-flat major. It begins with a dynamic marking of *mf* (mezzo-forte) at measure 25. The piece features a melodic line with eighth and sixteenth notes, including slurs and ties. A first ending bracket labeled 'A' spans measures 30-34, and a second ending bracket labeled 'B' spans measures 40-44. The piece concludes with a dynamic marking of *cresc.* (crescendo) at measure 49.

Clarinet/Bass Clarinet

Set 2 - Etude 1

Moderato

Musical score for Set 2 - Etude 1, measures 1-24. The score is written in 2/4 time and features a treble clef. It begins with a dynamic marking of *f* (forte) and a tempo marking of Moderato. The piece consists of five staves of music. Measure numbers 1, 6, 11, 16, and 21 are indicated at the start of their respective staves. A first ending bracket labeled 'A' spans measures 5-8, and a second ending bracket labeled 'B' spans measures 15-18. The piece concludes with a fermata over the final note in measure 24.

Moderato (In 2)

Set 2 - Etude 2 (Revised May 2023)

Musical score for Set 2 - Etude 2 (Revised May 2023), measures 25-48. The score is written in 2/4 time and features a treble clef with a key signature of one sharp (F#). It begins with a dynamic marking of *mf* (mezzo-forte) and a tempo marking of Moderato (In 2). The piece consists of five staves of music. Measure numbers 25, 30, 35, 40, and 45 are indicated at the start of their respective staves. A first ending bracket labeled 'A' spans measures 29-32, and a second ending bracket labeled 'B' spans measures 39-42. The piece concludes with a fermata over the final note in measure 48.

Alto and Baritone Saxophone

Set 2 - Etude 1

Moderato

Musical score for Set 2 - Etude 1, measures 1-21. The score is written in treble clef with a key signature of one sharp (F#) and a time signature of 2/4. It begins with a dynamic marking of *f* (forte) at measure 1. The piece features a variety of rhythmic patterns, including eighth and sixteenth notes, and rests. A first ending bracket labeled 'A' spans measures 6-10, and a second ending bracket labeled 'B' spans measures 16-21. The score concludes with a fermata at the end of measure 21.

Moderato (In 2)

Set 2 - Etude 2 (Revised May 2023)

Musical score for Set 2 - Etude 2 (Revised May 2023), measures 25-45. The score is written in treble clef with a key signature of one sharp (F#) and a time signature of 6/8. It begins with a dynamic marking of *mf* (mezzo-forte) at measure 25. The piece features a variety of rhythmic patterns, including eighth and sixteenth notes, and rests. A first ending bracket labeled 'A' spans measures 30-34, and a second ending bracket labeled 'B' spans measures 40-45. The score includes dynamic markings such as *cresc.* (crescendo) and concludes with a fermata at the end of measure 45.

**Trumpet, Baritone T.C.,
Tenor Sax, Horn in F**

Set 2 - Etude 1

Moderato

Musical score for Set 2 - Etude 1, measures 1-21. The score is written in 2/4 time and begins with a dynamic marking of *f*. It consists of five staves of music. Measure numbers 1, 6, 11, 16, and 21 are indicated at the start of their respective staves. A first ending bracket labeled 'A' spans measures 5-8, and a second ending bracket labeled 'B' spans measures 15-18. The piece concludes with a fermata over the final note in measure 21.

Moderato (In 2)

Set 2 - Etude 2 (Revised May 2023)

Musical score for Set 2 - Etude 2 (Revised May 2023), measures 25-45. The score is written in 6/8 time with a key signature of one sharp (F#). It begins with a dynamic marking of *mf*. The score consists of five staves of music. Measure numbers 25, 30, 35, 40, and 45 are indicated at the start of their respective staves. A first ending bracket labeled 'A' spans measures 29-32, and a second ending bracket labeled 'B' spans measures 39-42. The piece concludes with a fermata over the final note in measure 45.

**Trombone, Baritone B.C.,
Bassoon**

Set 2 - Etude 1

Moderato

1 *f*

6 *p* A

11

16 B

21

Detailed description: This block contains the first 24 measures of the etude. It is written in bass clef with a key signature of one flat and a 2/4 time signature. The music begins with a forte (*f*) dynamic and features a variety of rhythmic patterns, including eighth and sixteenth notes, and rests. There are two marked sections: 'A' at measure 6 and 'B' at measure 16. The piece concludes with a fermata at the end of measure 24.

Moderato (In 2)

Set 2 - Etude 2 (Revised May 2023)

25 *mf*

30 A *cresc.*

35 *cresc.*

40 B

45

Detailed description: This block contains measures 25 through 48 of the etude. The time signature changes to 6/8. The music starts with a mezzo-forte (*mf*) dynamic and includes crescendos. There are two marked sections: 'A' at measure 30 and 'B' at measure 40. The piece ends with a fermata at the end of measure 48.

Tuba

Set 2 - Etude 1

Moderato

1

6

11

16

21

Moderato (In 2)

Set 2 - Etude 2 (Revised May 2023)

25

30

35

40

45

SLSMEA Middle School Percussion Audition Packet • Set No. 2

Snare Drum

$\text{♩} = 80-100$

The musical score for Snare Drum consists of 44 measures, organized into eight staves. The tempo is marked as $\text{♩} = 80-100$. The score includes various dynamics and articulations:

- Measures 1-4: *p* (piano) to *f* (forte).
- Measures 5-8: *mp* (mezzo-piano).
- Measures 9-14: *mf* (mezzo-forte) to *pp* (pianissimo).
- Measures 15-20: *f* (forte) to *pp* (pianissimo) to *f* (forte).
- Measures 21-25: *p* (piano) to *f* (forte) to *pp* (pianissimo) to *mp* (mezzo-piano) to *mf* (mezzo-forte).
- Measures 26-30: *f* (forte) to *f* (forte).
- Measures 31-36: *mp* (mezzo-piano) to *pp* (pianissimo).
- Measures 37-40: *ff* (fortissimo) to *mf* (mezzo-forte).
- Measures 41-44: *pp* (pianissimo) to *ff* (fortissimo) to *pp* (pianissimo).

Articulations include accents (>) and slurs. A repeat sign is present at measure 24. The score concludes with a fermata over measure 44.

SLSMEA Middle School Percussion
Audition Packet • Set No. 2

Timpani

♩ = 100-120

The musical score for Timpani consists of 18 measures, numbered 1 through 18, arranged in four staves. The tempo is marked as ♩ = 100-120. The score includes various dynamic markings: *f* (forte), *p* (piano), *fp* (fortissimo piano), *pp* (pianissimo), *ff* (fortissimo), and *rit.* (ritardando). The notation includes eighth and sixteenth notes, rests, and slurs. The piece concludes with a double bar line at the end of measure 18.

SLSMEA Middle School Percussion
Audition Packet • Set No. 2

Keyboard Mallets

$\text{♩} = 72-98$

1 2 3 4

5 6 7 8

9 10 11 12

13 14 15 16

17 18 19 20

f

p

p

mf

f

SLSMEA Middle School Audition Scales

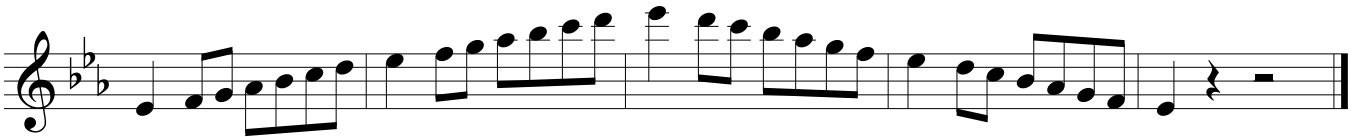
Suggested Scale Patterns and Suggest Ranges

♩ = 80

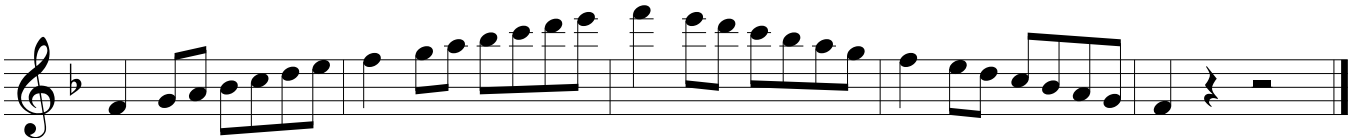
Concert
Bb



Concert
Eb



Concert
F



Concert
Ab

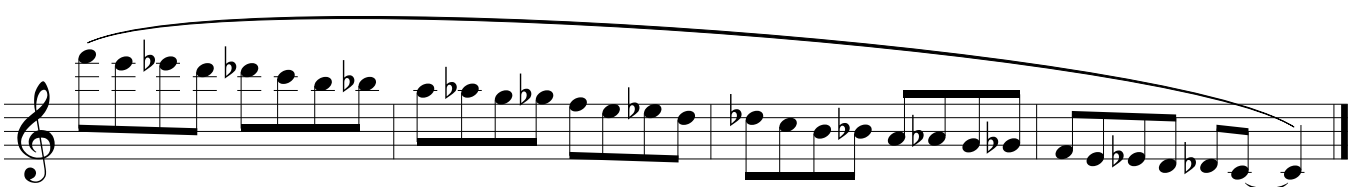
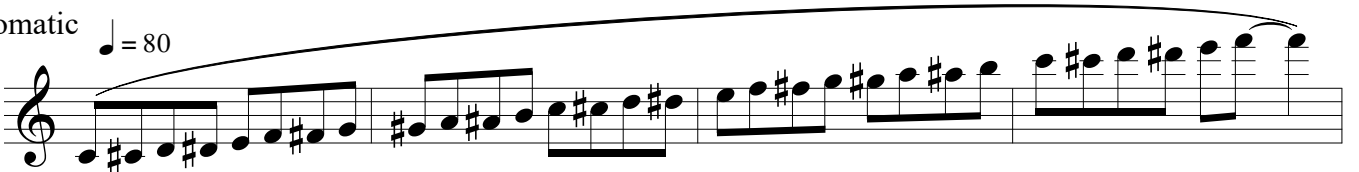


Concert
C



Chromatic

♩ = 80



Oboe

SLSMEA Middle School Audition Scales

Suggested Scale Patterns and Suggested Ranges

♩ = 80

Concert
Bb



Concert
Eb



Concert
F



Concert
Ab

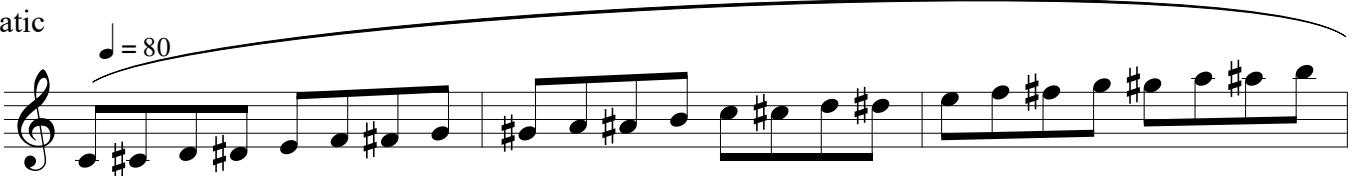


Concert
C



Chromatic

♩ = 80



Bassoon

SLSMEA Middle School Audition Scales

Suggested Scale Patterns and Suggested Ranges

Bb



Eb



F



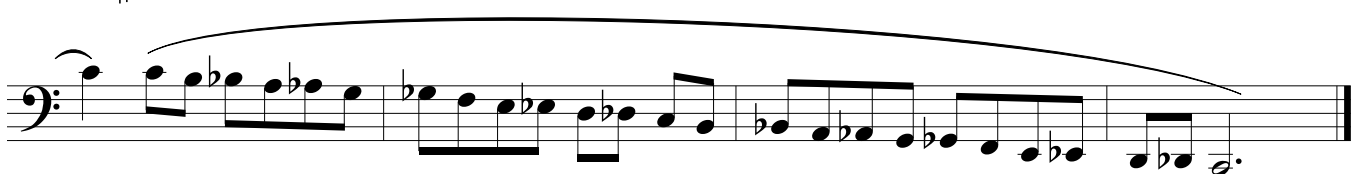
Ab



C



Chromatic ♩ = 80



SLSMEA Middle School Audition Scales

Suggested Scale Patterns and Suggested Ranges

♩ = 80

Concert Bb

Concert Eb

Concert F

Concert Ab

Concert C

Chromatic

♩ = 80

SLSMEA Middle School Audition Scales

Suggested Scale Patterns and Suggested Ranges

♩ = 80

Concert Bb

Concert Eb

Concert F

Concert Ab

Concert C

Chromatic


♩ = 80

Tenor Saxophone

SLSMEA Middle School Audition Scales

Suggested Scale Patterns and Suggested Ranges

Concert Bb



Concert Eb



Concert F



Concert Ab



Concert C



Chromatic ♩ = 80



SLSMEA Middle School Audition Scales

Suggested Scale Patterns and Suggested Ranges

♩ = 80


Concert Bb



Concert Eb



Concert F



Concert Ab



Concert C



♩ = 80

Chromatic

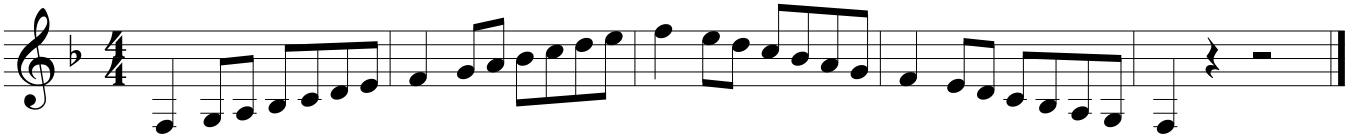


French Horn

SLSMEA Middle School Audition Scales


Suggested Scale Patterns and Suggested Ranges

Concert Bb



Musical notation for the Concert Bb scale in 4/4 time. The scale starts on Bb and ends on Bb. The pattern is: Bb, C, D, E, F, G, A, Bb, A, G, F, E, D, C, Bb.

Concert Eb



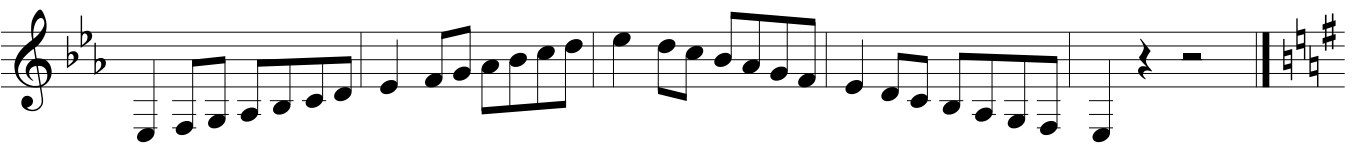
Musical notation for the Concert Eb scale in 4/4 time. The scale starts on Eb and ends on Eb. The pattern is: Eb, F, G, A, Bb, C, D, Eb, C, Bb, A, G, F, Eb.

Concert F




Musical notation for the Concert F scale in 4/4 time. The scale starts on F and ends on F. The pattern is: F, G, A, Bb, C, D, E, F, D, C, Bb, A, G, F.

Concert Ab



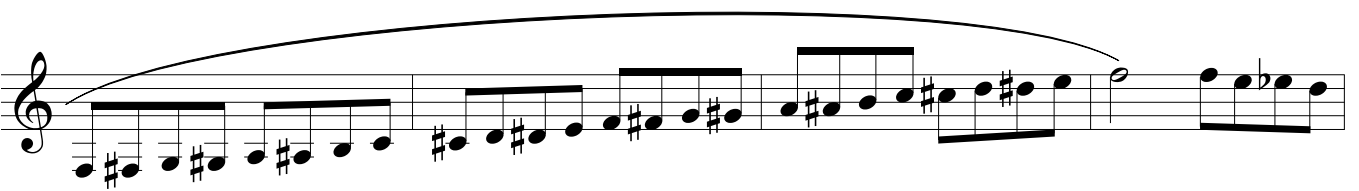
Musical notation for the Concert Ab scale in 4/4 time. The scale starts on Ab and ends on Ab. The pattern is: Ab, Bb, C, D, E, F, G, Ab, G, F, E, D, C, Bb, Ab.

Concert C



Musical notation for the Concert C scale in 4/4 time. The scale starts on C and ends on C. The pattern is: C, D, E, F, G, A, B, C, B, A, G, F, E, D, C.

Chromatic




Musical notation for the Chromatic scale in 4/4 time. The scale starts on C and ends on C. The pattern is: C, C#, D, D#, E, E#, F, F#, G, G#, A, A#, B, B#, C.




Musical notation for the Chromatic scale in 4/4 time. The scale starts on Bb and ends on Bb. The pattern is: Bb, B, C, C#, D, D#, E, E#, F, F#, G, G#, A, Ab, Bb.


SLSMEA Middle School Audition Scales

Suggested Scale Patterns and Suggested Ranges


Concert Bb  Musical staff for Concert Bb scale in 4/4 time, bass clef, key signature of two flats (Bb). The scale pattern consists of quarter notes: Bb, B, C, D, Eb, E, F, G, Ab, A, Bb. The piece ends with a fermata over the final Bb.

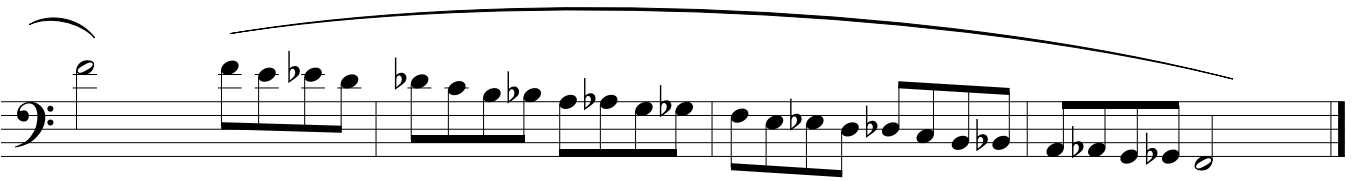
Concert Eb  Musical staff for Concert Eb scale in 4/4 time, bass clef, key signature of three flats (Eb). The scale pattern consists of quarter notes: Eb, E, F, G, Ab, A, Bb, B, C, D, Eb. The piece ends with a fermata over the final Eb.

Concert F  Musical staff for Concert F scale in 4/4 time, bass clef, key signature of one flat (F). The scale pattern consists of quarter notes: F, G, Ab, A, Bb, B, C, D, Eb, E, F. The piece ends with a fermata over the final F.

Concert Ab  Musical staff for Concert Ab scale in 4/4 time, bass clef, key signature of three flats (Ab). The scale pattern consists of quarter notes: Ab, A, Bb, B, C, D, Eb, E, F, G, Ab. The piece ends with a fermata over the final Ab.

Concert C  Musical staff for Concert C scale in 4/4 time, bass clef, key signature of no sharps or flats (C). The scale pattern consists of quarter notes: C, D, Eb, E, F, G, Ab, A, Bb, B, C. The piece ends with a fermata over the final C.

Chromatic  Musical staff for Chromatic scale in 4/4 time, bass clef. A tempo marking of quarter note = 80 is shown. The scale pattern consists of quarter notes: C, C#, D, D#, E, E#, F, F#, G, G#, A, A#, B, B#. The piece ends with a fermata over the final B#.

 Musical staff for descending chromatic scale in 4/4 time, bass clef. The scale pattern consists of quarter notes: B, Bb, Ab, A, G, F, E, Eb, D, C, B. The piece ends with a fermata over the final B.

Tuba

SLSMEA Middle School Audition Scales

Suggested Scale Patterns and Suggested Ranges

Concert Bb




Musical notation for the Concert Bb scale in bass clef, 4/4 time. The scale consists of eight measures: four ascending and four descending. The notes are Bb, C, D, Eb, F, G, Ab, and Bb. The first measure is a quarter note, the next two are eighth notes, and the last is a quarter note. The piece ends with a double bar line.

Concert Eb




Musical notation for the Concert Eb scale in bass clef, 4/4 time. The scale consists of eight measures: four ascending and four descending. The notes are Eb, F, G, Ab, Bb, C, D, and Eb. The first measure is a quarter note, the next two are eighth notes, and the last is a quarter note. The piece ends with a double bar line.

Concert F



Musical notation for the Concert F scale in bass clef, 4/4 time. The scale consists of eight measures: four ascending and four descending. The notes are F, G, Ab, Bb, C, D, Eb, and F. The first measure is a quarter note, the next two are eighth notes, and the last is a quarter note. The piece ends with a double bar line.

Concert Ab



Musical notation for the Concert Ab scale in bass clef, 4/4 time. The scale consists of eight measures: four ascending and four descending. The notes are Ab, Bb, C, D, Eb, F, G, and Ab. The first measure is a quarter note, the next two are eighth notes, and the last is a quarter note. The piece ends with a double bar line.

Concert C



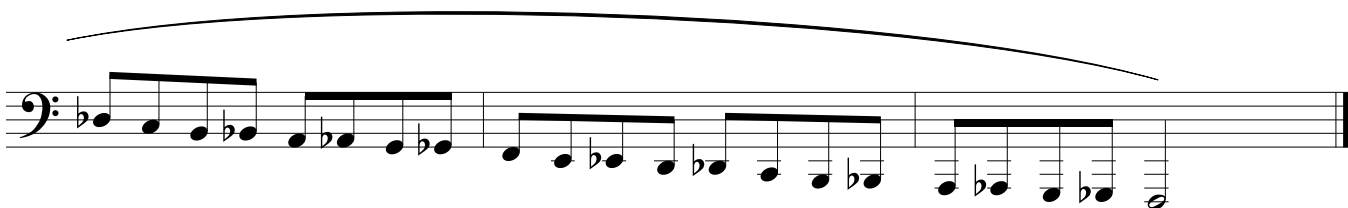
Musical notation for the Concert C scale in bass clef, 4/4 time. The scale consists of eight measures: four ascending and four descending. The notes are C, D, Eb, F, G, Ab, Bb, and C. The first measure is a quarter note, the next two are eighth notes, and the last is a quarter note. The piece ends with a double bar line.

Chromatic

$\text{♩} = 80$



Musical notation for the ascending chromatic scale in bass clef. It consists of eight measures of eighth notes: C, C#, D, D#, E, E#, F, F#. The notes are beamed together in pairs. The piece ends with a double bar line.



Musical notation for the descending chromatic scale in bass clef. It consists of eight measures of eighth notes: F#, F, E, Eb, D, C, Bb, B. The notes are beamed together in pairs. The piece ends with a double bar line.